

世联地产顾问丛书

# 工业园

世联地产 编著  
晋 级 城 市 战 略



机械工业出版社  
China Machine Press

/ .—

2010.3

ISBN 978-7-111-30106-6

I ... - - - -

F424 F291

CIP 2010 043577

22 100037

2010 4 1 1

170mm×242mm 8.25

ISBN 978-7-111-30106-6

42.00

010 88379210 88361066

010 68326294 88379649 68995259

010 88379007

hzjg@hzbook.com





“

”

“

”

22

“

”

2010

“

”

“

”

\_\_\_\_\_

2010 4

# 目录

*Contents*

---

---

|

|

|

|

|

|



**1**

|

|

20

“

”

“

”

|

|



( )2.14

“ ”

“ ” “ ”

“ ”



1- 2 “ ”



1- 3

1979 8

|

|

|

|

“

” “

”

|

|

“

”

1.5

10

3 000

99

“

”

“

”



1992

1995

1992

“ ”

“

”

“ ”

4

“

”

“

”

4

10

40

“

”

2008

“

”

62

“

”



20 80 “ ”  
“ ” “ ” “ ”

1949 1994  
6 358 815 290  
1994 55 400  
800

20 80 80%  
5% 1.5%  
55 43 13  
55 28 1991 2.4  
14 40

| |

20 80 90

” “ ”

“ ”

450

700

300

“ ”

“ ”

“ ”



20 90

1- 4

1992

55

2.5

52

“ ”

1995

38



14

18 “ ” 1- 5

18 “ ” 1983 ,

1995 32

36

“

.....”

18

“ ”

“ ”

5

“ ” “ ” “ ” “ ”

”



1- 4 1998 120



1- 5 1995

2317 “ ” “ ” 18

|

|

“

”

“

”

“

”

“

”



1995

1992

1-6



1-6 1995

5 10  
50% 2008  
46%  
5 10 10 55% 60%

2-1

	20%	20% 50%	50%
	20% 50%		30% 10% 50%
	1870 26% 51% 25% 24%	1910 53% 33% 32% 35%	1970 74% 34% 63% 3%

50%

5 10

10 15

35%

“ ”

66

10



21

2004 600 2002 2006 700 WTO 2007 500 800 2-2

2-2

		1970	1980	1990	2000	2004
		134	551	2 078	13 930	7 108
		95	466	1 721	11 205	3 800
		70.9	84.6	82.8	80.4	53.5
		39	85	357	2 461	2 332
		29.1	15.4	17.2	19.6	32.8
		0	0.6	35	407	606
		0	0.1	1.7	2.9	8.5

|

|

10%

70%

60%

30%

25% 20

90

35%

2010

50%

15

2004

600

40

|

|

“

”

“

”

“

+

”

“

”

| |

“ ”

⊖

sprawl

8 600

2/3

”

“

---

⊖  
1. <http://www.guandian.cn/article/20080520/73399.html>  
2. <http://theory.people.com.cn/GB/49154/49156/3645698.html>

20 80

“ ”

Andres

Duany

Elizabeth Plater- Zyberk

traditional neighborhood development TND

Peter Calthorpe

transit - oriented development

TOD

“ ”

600

TOD

TOD

“ TOD ”

“ TND ”

“ 5 ”

|

|

400

“ ”

“ ”

“ ”

“ ”

Panhandle Seaside

“ ”

“ 12 000 ”

⊖

“ ” “ ” smart growth

2000 (APA) 60 “

” Smart Growth America

|

|





5

À “

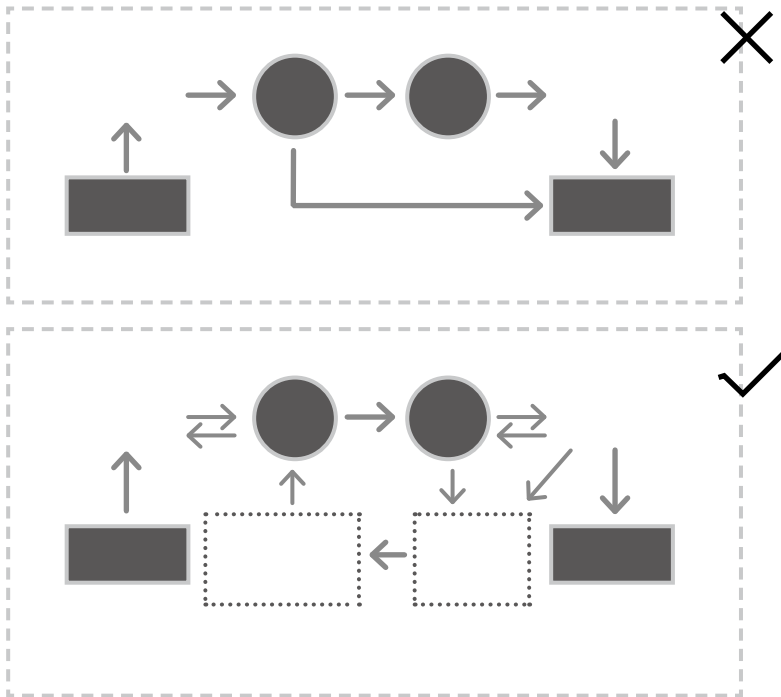
2004

“ ”  
“ ”

2-1

“

”



2-1

|

|

|

|

“ ”

“ ”

“ ”

M50

“ ”

“

” “

” “

” 2004

20 90

“ ”

,

“ ” “ ”

1999

“ ”

2002

1131

1133

720

50

50

2004

“

”

50

M50

2000

50

2002

50

“

” 2004

“

”

50

2005 4

50

“ M50 ”

M50

20

140

M50

2008

M50

M50

M50

“ ”

2-2



2-2 M50

“ ”



2005 M50

M50

M50 SVOT

“ + + ”

M50

M50 “ CREATIVE M50”

M50

M50

M50

M50

ADICOLOR

M50

M50

|

|

“ — ”

“ ”

“ ”

“ ”

1999 8

“ ”

“ ”



| |

“ ”

“

”

“ ”

2000 2

2007

“

”

37

2005



2-3

168

24



2-3

2007

4.2

25

2007

54

2010

2-4

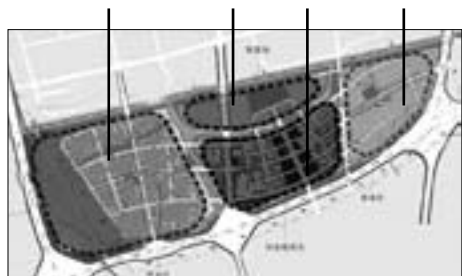
466.77

“ ”

2-5



2-4



2-5

T

6

2 6 2 8



2 6



2 8



2 7



|

|

“ ” “ ”

|

|

“

”

“

”

“

”



TECHNOPARK



**3**

1.4

18

| |

3-1 3-2  
20 90

“ ” “ ”  
2001  
“ ”

“ ” living mixed city



3-1



3-2

Schiffbau



Schiffbau

Technopark

250

1 750

3-4



3-4 Technopark

”

“

		8	
		7 333	12 000
		2004	2005
50			
	“	”	
			5 000
2006		2 400	8 400
	U 5	2008	6 6.5 / /
		2 4 / /	
	Winking		Bard
NACO			AEDAS

29%

B

ALSOP

“ ”

3-1

“

3 1

		(%)			(%)
	17	33		15	29
	6	12		6	12
	4	8		5	10
	2	4		3	6
	2	4		3	6
	1	2		2	4
	1	2		1	2
	51	100		16	31
				51	100

”

Can you 3S

“ ”

logo

3-5



3-5





20 30

“ ”

“ ”

140

36

3-2 3-7

1998

“ ”

“ ” “ ”

3-2

				220
				220
				220
				220 1
				210 2
				210 2
				210 2
				210 3
				210 5
	N/A			210 7
				210 9

祇

2

18

102

600

1 10



3-7  
20 30

140

36

2004

“

”

137

144

2006

“

”

“

“

”

”

“

”

“

”

2008 4

“

”

“

”

“

”

“

”

|

|

2008

1989

1999

30

12

100

8

50

2

350

400

30

20

90

“ ”

| |

“ ” “ ” “ ”

120 400

1999 91%  
7% 2%

2006 60%  
25% 15%



“ 1999

.....

.....

”

“ ”

9

CBD

150 300 450 600

45 6

37

6

| |

1999

CBD

20

20 90

80

90

400 500



2000

6

9

146

60 30

2006

“

”

10

|

|

2

200

130

1



285

450

4.16

19

3-8



3-8

|

|

1999

45

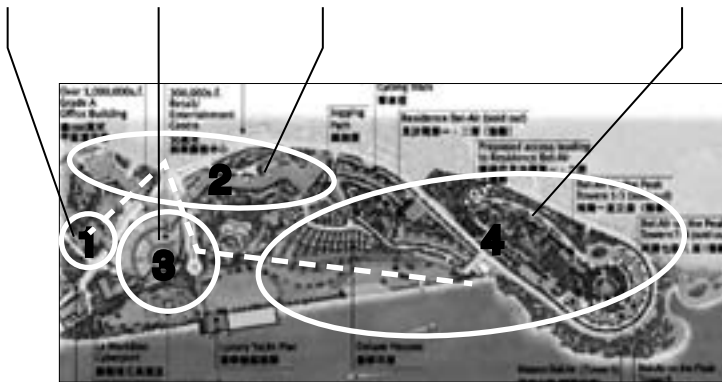
14

48

48

280

40

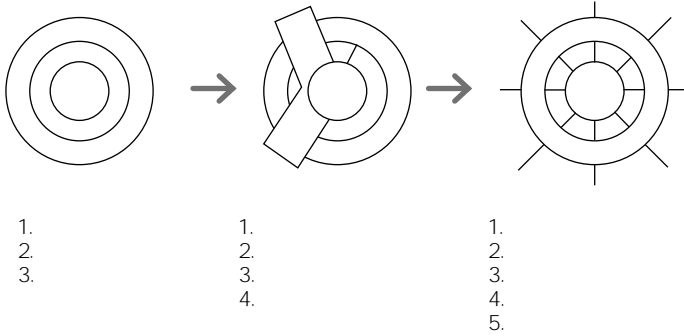


2002	2003		2003
	1 204	97.65	2004
2003 IBM	2005 2 000	221	
	56		
2005	45	2007	
		1 000-2 000	
		82% - 85%	



# 4

4 1



4 1

|

|

“ ”

20 60

“ ”

4 2



4 2





| |

48  
11 20 80 30%  
40% 50  
4 4  
20  
“ ”

20 60 “ ” “ ”



“ ”

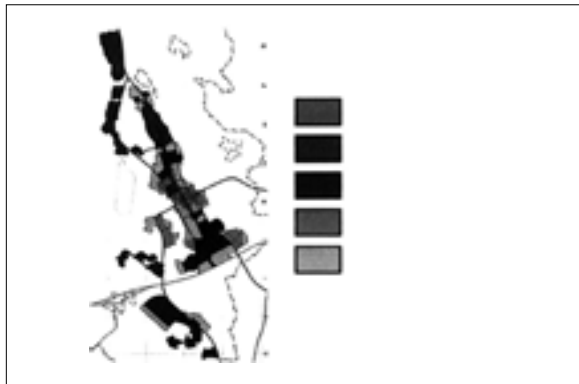
40

1963

1965

1968

4 5



4 5

20

4 6

1972 170

“ ”

1977

1980

43 ( 80%)

9 000

12.4 1990

20



4 6 20 70

1981

8

( “ ” )

1983

4-7 HUD

1985 “ ”



4-7

| |

“

”

4 8 4 9 1985 Joban

1987

1985

CREO

1988

4 10



4 8



4 9 1985

1987

6

10



4 10 20 80

1990

4 11 4 12

1987

1995

2005 8

58

( )

“ ”

130



4 11



4 12



45

	1989	1998		12.7%
1998			18.8	6.5
12.3		2004 3		198
	1998			
2030		35		10
12		25		



University of Tsukuba

27

15

12

“ ”

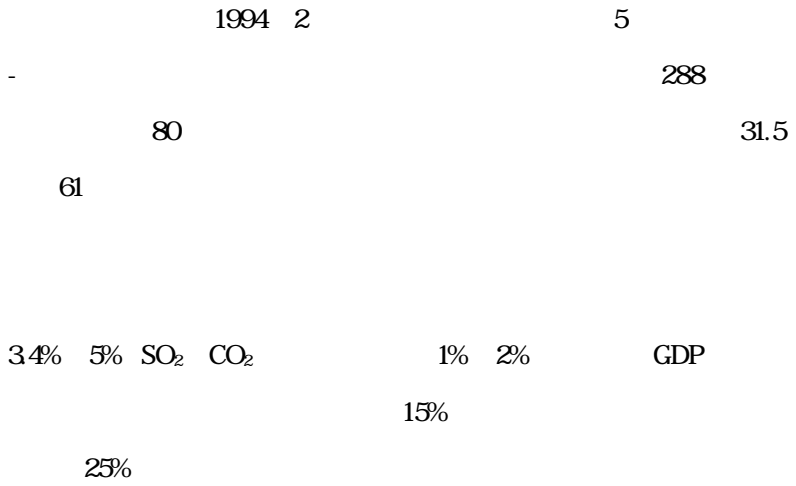
“ ”

1

4 13



4 13



80

4 14

15

4 15

1994 5 12

1994 2 26

11

CSSD

BD

14



+	---	---
1994 5 " "	1998 2 5	2001 3 2003 2002-2005
1994 11		
		2008 90

| |



1998 2 5

“ ” “ ”

40%

“ ”

“ ”

“ ”

27

20

12

10

8 000

CBD

“ ”

15

15

“ ”

“ ”

25% 3 000  
247 11 000 1 156  
4 16  
30% 4%  
7% 15% GDP  
25% 30%  
IT IC 3% 16%

1 500

23%



4 16

3 000



20

50

“ ”

“ ”

800

95%

8

1.2

4-17

70

500

1 500

4 500

“

”



4-17

1.2

“ ” “ ”

4 18

10

4



4 18



4 20



4 20

4-21

94.52

| |

1990

95

94.52

1990-1993

95

5.5

1994-1996

95

1997 1998

“

” 2

“

”

15

10



| |

16

6

“ ”

“ ” “ ” “ ”

(VSAT)

1 000

74

3 000

20

1

7

10

2

“

”

“

NEC

”

“

”

37





( )

10

15

1

10

0.4

41

212

5A

1996 10





4 25



4 23



4 24

2006 7

2007

“

” “

”

2007

44

12



Office Park

500

2008 Office Park

“ ”

5 Office Park

1 500

“ ”

Office park 2008

CBD 500

4-26



4-26

5

“

”

“

”

“

”

5-1



5-1

| |

Ruhrgebiet 4 593  
1.3 570 9  
2 700 5 24  
50

200 5-2 1811

19



5-2





20 80

1957 140

7 47 4 26 4

30 5

64

95

31 11

“ ” 20 60

5-3



5-3

Henrichshuette

1854 1987



5-4



5-5 “ ”

” eco-museum

5-4 5-5

“

### Landschaftspark Duisburg-Nord



5-6

5-6

1985

23

5-7

1758



5-7



shopping mall

Centro

117

67

Gasometer Centro

Gasometer

Centro Gasometer



1998  
“ ” 19  
6 12 5- 8 19  
3  
500 25  
RI  
“  
” “ ” 150  
5- 9- 5- 11





5- 9“ ”



5- 10 Gute- Hoffnungs- Huette



5- 11



Henrichenburg Shiplift





| |

110

1.65

5-13

20

70

“ ”

“ ”

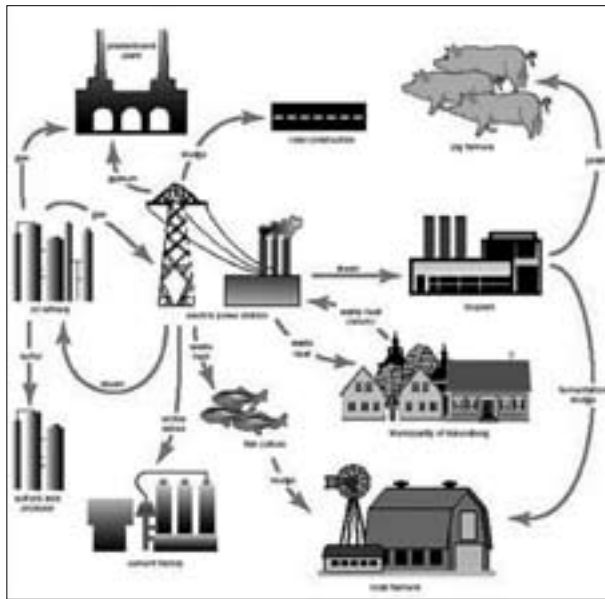
“ ”

30





5-14



5-14

19

9

6

6

2

60

190

100

2



8

20

2

17.5

1.02

45

1.5

11.3

1.7

11.5 /

1.4

1.18

6 000

1 000

5-15



5-15

“ ”

|

|

2005 2 16



1997 2010 6  
1990 5.2%  
“ ”  
.....  
2006  
1%GDP 5% 20% GDP  
2007 7  
2007 12 3  
2020 25% 40%  
2008 7 G8  
2050 50%  
2009 12  
2020 30  
.....



Masdar Initiative

5-17

“ ”

11

6.4

“ ”

“ ” “ ( )”

220

1 500

5

2008 2

2016

2030



5-17

64

“ ” .....

5-18



5-18

3 70

5-19



5-19

5-20

Transit

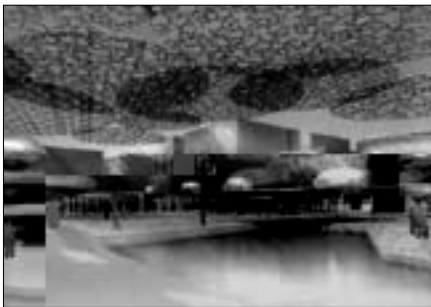
2 500

Personal Rapid

200

15

200



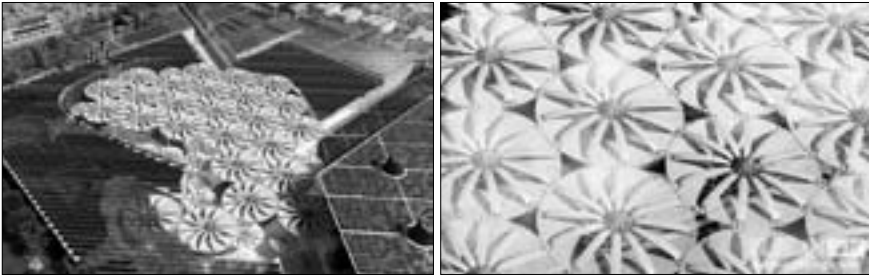
5-20

200

1/4 800

80%

5-21



5-21

8 000

25 20 000

5-22



5-22



2020

98%

### One Planet Living

60

2010

2016

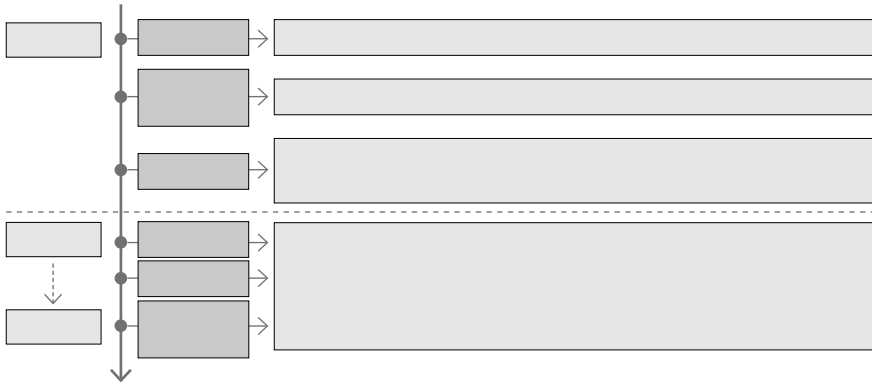
5-23

20%

80%

44

176



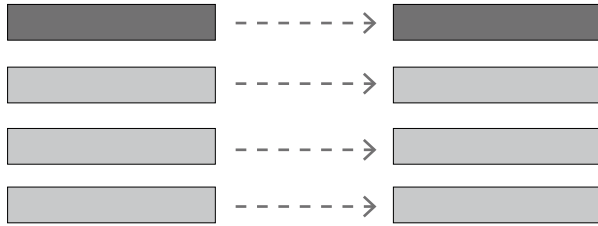
5-23

One Planet Living™

“ ” “ ”

68%

9 7  
2% GDP  
25 20 ( )  
5-24



5-24

25

15

15 51

30

“ ” “

”

“ ”

“ Fair-Fax ” ‘ ’

Sunshine Town

“



”

2020

2005

40% 45%

“

”

- 1 Barry The Effects of Direct Foreign Investment in The Presence of Increasing Returns on Specialization J Journal of Development Economics 2001 34 287-307.
- 2 Bass L. Cleaner production and industrial ecosystems a Dutch experience J Journal of Cleaner Production 1998 6 189-197
- 3 BlomstromMand Kokko A. Foreign Direct Investment and Spillovers of Technology J International Journal of Technology Management 2001 22 435-454.
- 4 Charles Landry The Creative City a toolkit for urban innovations M London Earthscan Publishment Ltd 2000
- 5 Cohen Rosenthal E. Eco- industrial Development Program Cornell Work and Environment Initiative N Eidpupdate Cornell University 2001
- 6 Edward J. Feser, Edward M. Bergman. National Industry Cluster Templates A Framework For Applied Regional Cluster Analysis J Regional Studies 2000 34 1 1-19
- 7 Kift Roy Tour the Ruhr the English Language Guide M . Essen Klartext Verlag 2000.
- 8 Kijo Localised Technical Progress and Transfer of Technology and Economic Development Journal of Economic Theory J 1993 6 585-595
- 9 Kommunalverband Ruhrgebiet. The Ruhrgebiet: facts and figures M . Esser: Wöste Druck, Essen- Keittwig 2001.
- 10 Manufactured Sites rethinking the post- industrial landscape M . London & New York Spon Press 150-161.
- 11 Sjunholm, F. Productivity Growth in Indonesia The Role of Regional Characteristics and Foreign Investment J Economic Development and Cultural Change 1999 3 559-584.
- 12 UNCTAD World Investment Report 2005 United Nations New York and Geneva 2005.
- 13 . " " R 2004
- 14 D 2007.

15 M 2004  
 16 M 2005  
 17 J 2008 9 6-7  
 18 FDI D 2007  
 19 M 2006  
 20 M  
 2009  
 21 D  
 2009  
 22 M 1998  
 23 J 2006 2 237  
 24 J  
 2002 9 57  
 25 D 2006  
 26 D 2006  
 27 J 2008 Z1 39-41  
 28 D 2007  
 29 J 2002 5 81-83  
 30 M 2002  
 31 —798 M50 LOFT  
 J 2007 9 .  
 32 J  
 2006 8 173  
 33 J 2008 1 87-90

34 J  
2006 1 38-40

35 D 2007.

36 M 2006

37 — [J]  
2007 4 43

38 J 2008 8 48

39 D 2007.

40 M 1998

41 J 2005 9 .

42 — D  
2007.

43 J 2008 12 .

44 <http://www.sicp.gov.cn/>

45 <http://theory.people.com.cn/GB/49154/49156/3645598.html>

46 <http://www.guardian.cn/article/20080520/73399.html>

47 <http://www.chinavalue.net/Blog/BlogThread.aspx?EntryId=237463>

48 <http://www.zjpark.com>

49 [www.100yq.com/](http://www.100yq.com/)