

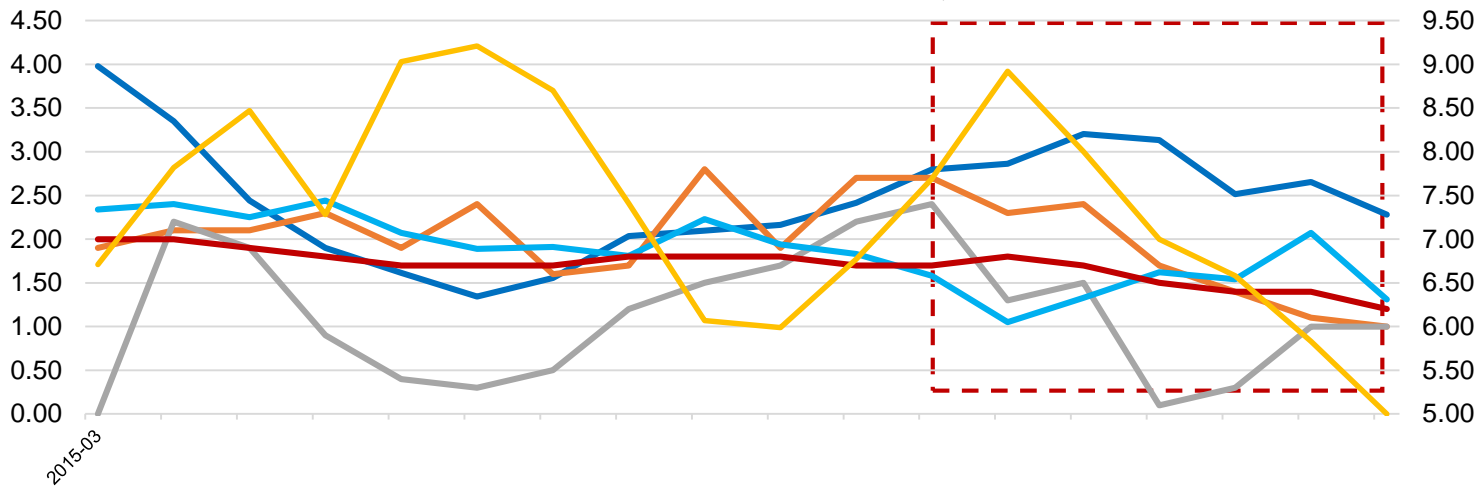


2019

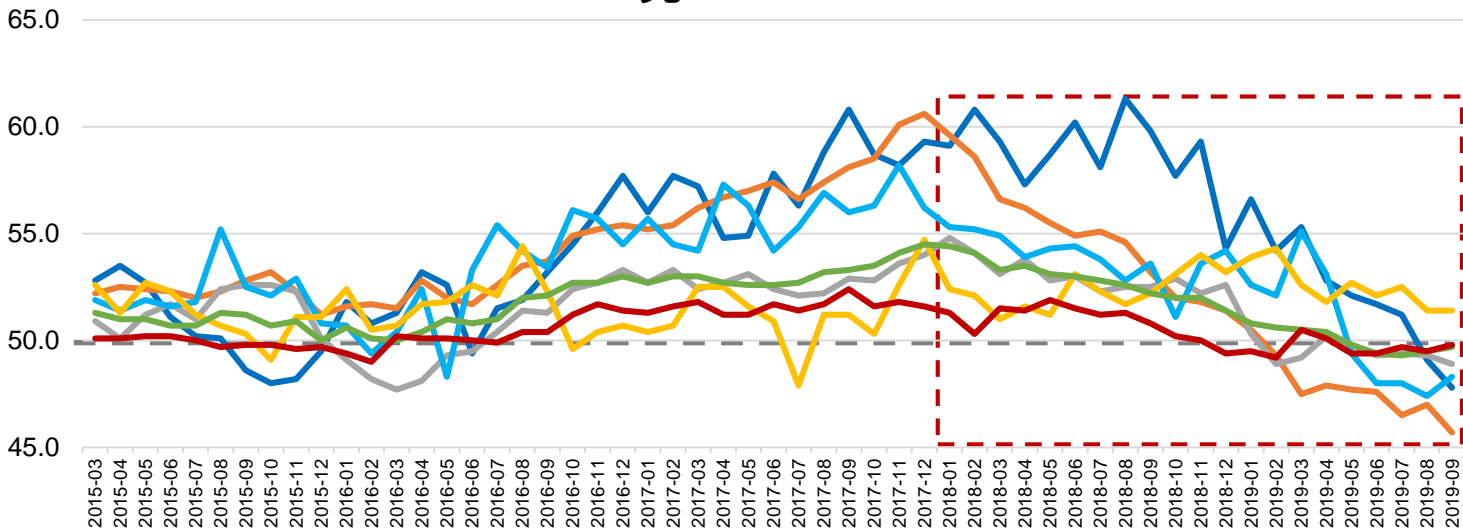
1



GDP: : ,



亮 PMI



2018

2019Q3

TOP5

PMI

2019

40

M2

7

5400

8

9

3

GDP

9

1%

6.0%

9000中

0.5%+

ISM: v f . (« X Ø) d j H) 1 6 k i : ç X Ø A - Ê & €



7 30

" "

2018

- -

" "

5-8

/ /

2019

" "

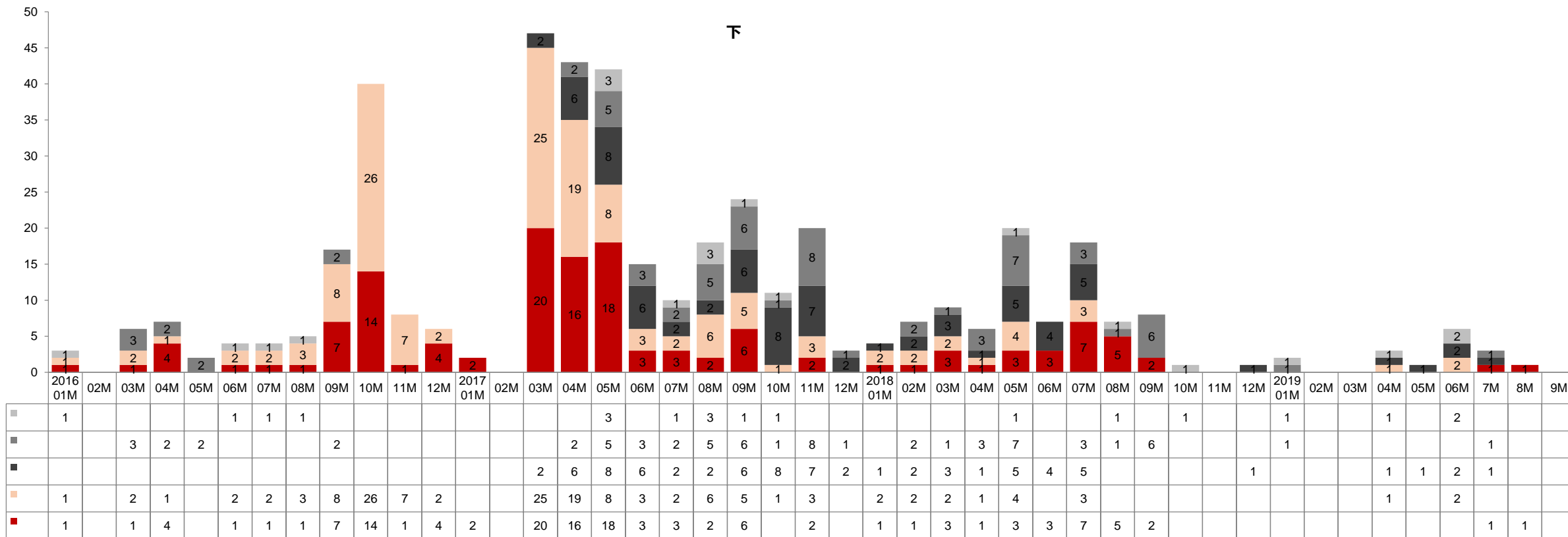
2019

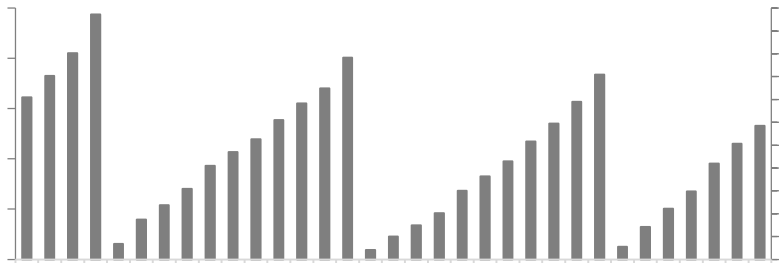
/

+

↑

下





2017-2018

亮

1-8

36%

7

+

-2.2%

" "

-3.0%

3

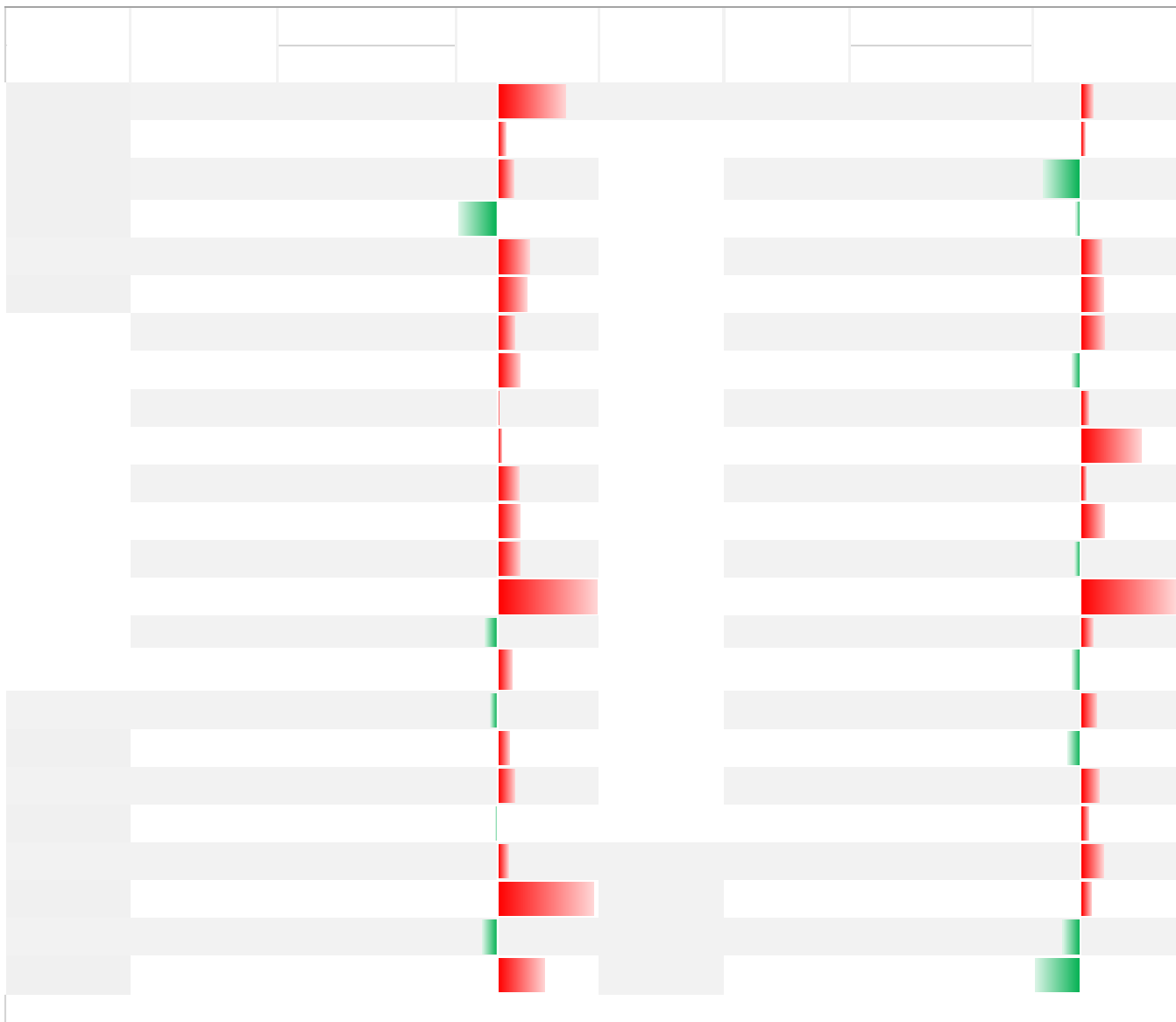
74%

95%

35%



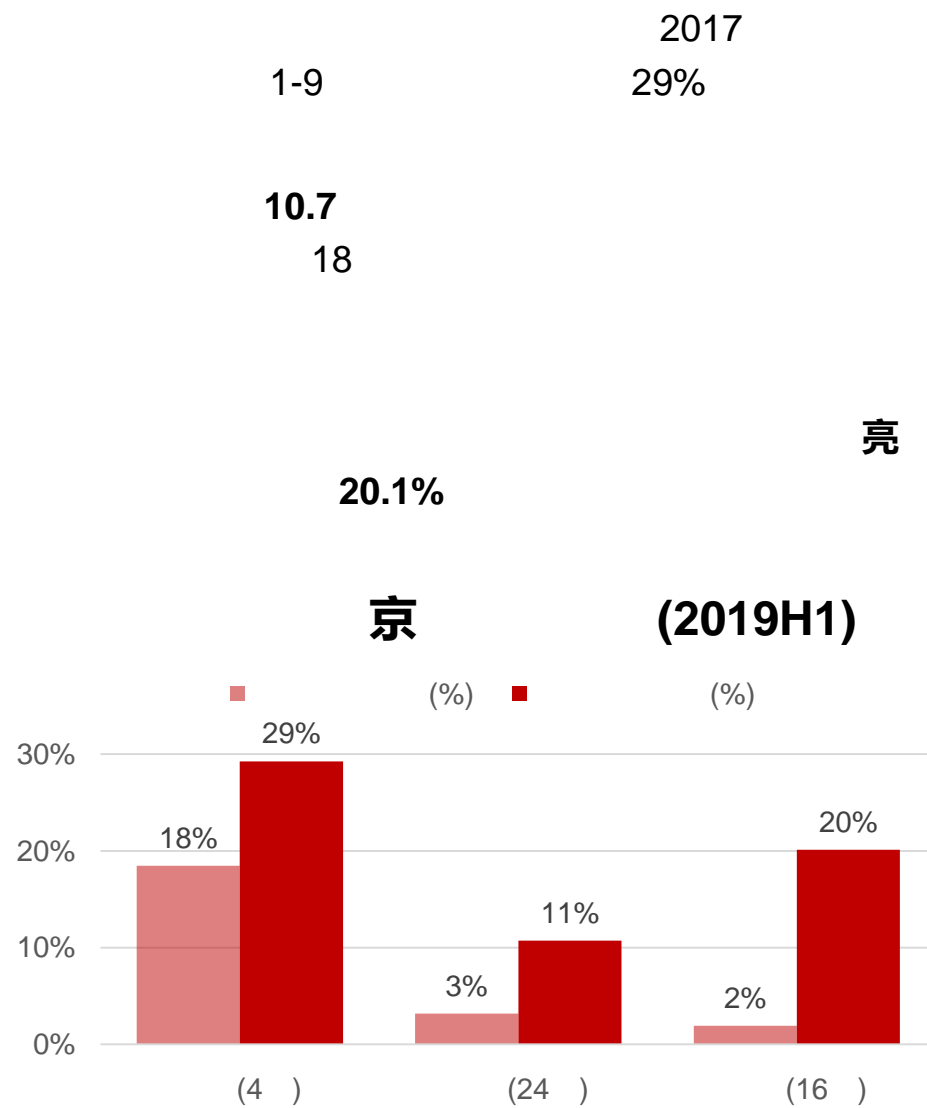
44 京 (2019H1)



为

47 23 14

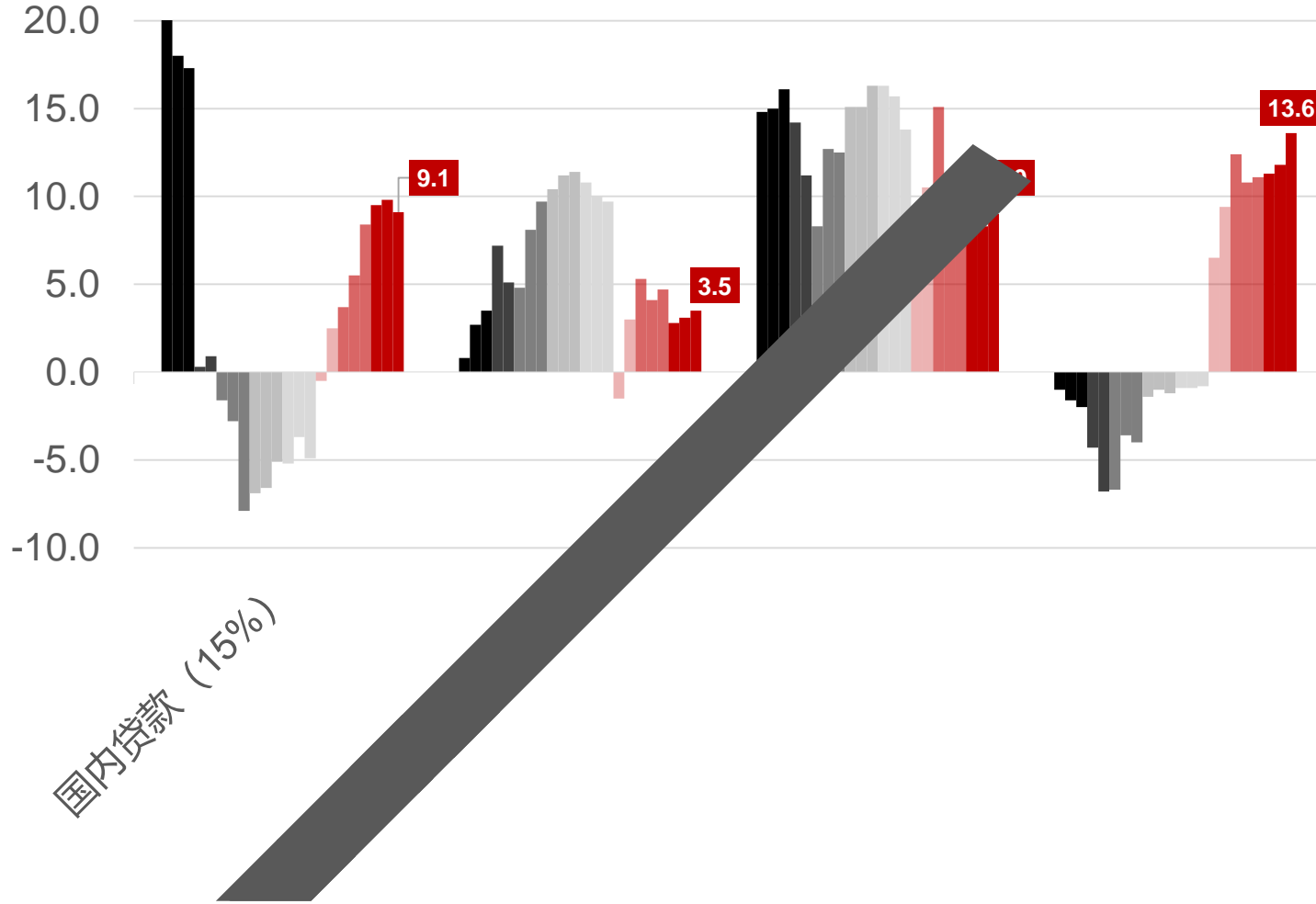
世



亮



(2017.10-2019.08)



7.1%

9

13.06 中

Q1

4

9

10.8%

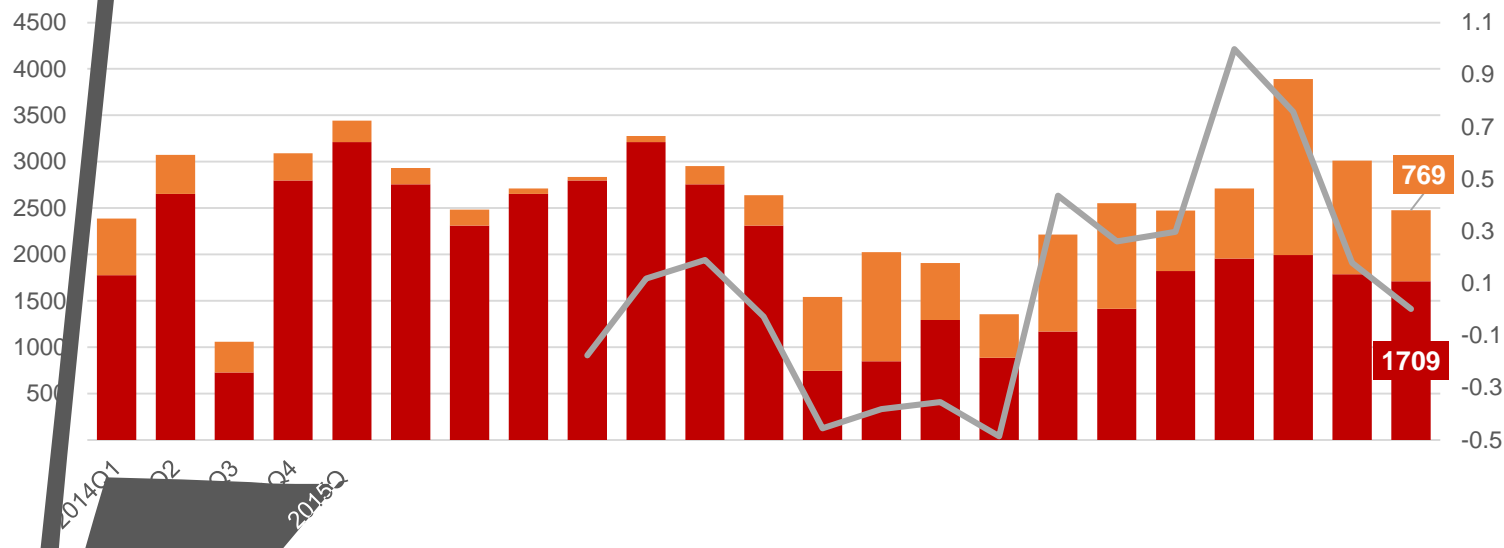
5-8

+

↑



(中 2014Q1-2019Q3)



(中 2014Q1-2019Q3)

2019 1-9

9,380中

5,487

2019 1-9

5,039中

1,903

53%

2019

1,213中

-29%

-19%

7

7

3

30%

3,893

43%

5%

3445

8

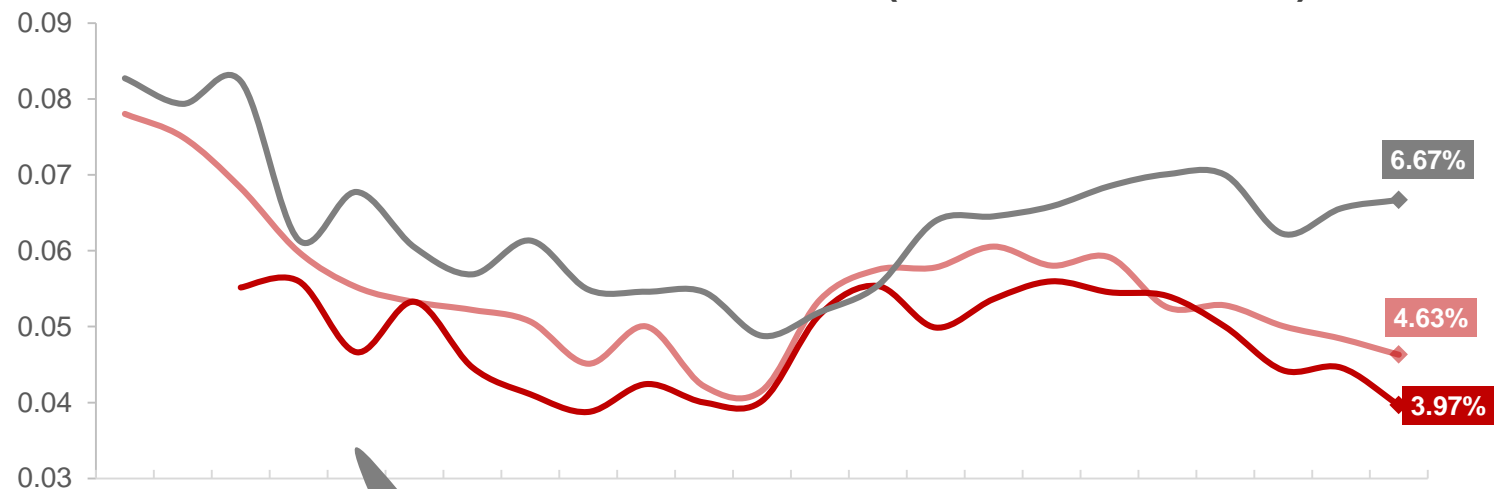
7

9

2/3



(% 2014Q1-2019Q3)



0.21%

0.49%
0.11%

2014Q1

2019Q3

万

4
10

15
10%
5.6%

8
12%
36



2019 1-9

29.15中

-1.6%

4.68 中

10.7%;

京

13.97中

0.2%

3.88 中

14.8% 2019

2,784

/ 17.9%

"

5

6

9

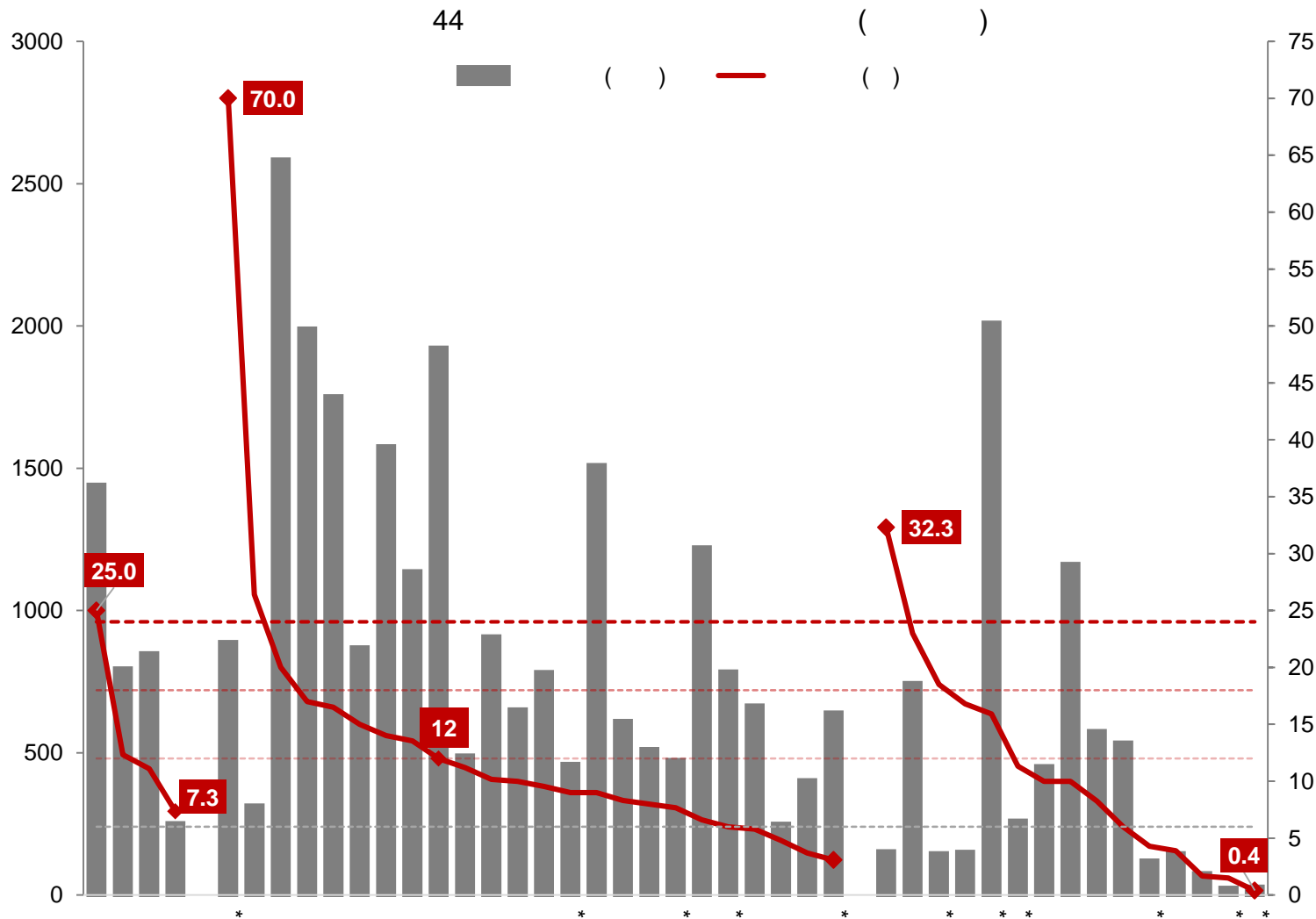
9 15



世 亮

4 " "

1



为

44				
14.4	10.2	9.7		Q2
-1.4	1.2	0.1		
		25		

2018

35%

200%

12

12

*

-



2019 1-9

京

TOP20

京

		京		京			
		()	(%)	()	(%)		
1		585	226%	359	-39%	265%	15.0
2		677	198%	*65	40%	158%	1.5
3		232	122%	286	89%	33%	3.9
4		1453	120%	*436	-12%	132%	7.7
5		1262	108%	383	-16%	124%	11.2
6		1360	99%	748	13%	85%	10.2
7		1586	88%	930	12%	76%	17.0
8		69	83%	264	20%	64%	7.3
9		2192	79%	867	16%	63%	16.5
10		2022	61%	725	-3%	64%	13.5
11		996	55%	623	27%	28%	8.3
12		979	47%	571	20%	27%	12.3
13		919	45%	1272	12%	33%	12.0
14		529	38%	646	-11%	49%	11.1
15		1126	38%	826	61%	-23%	9.6
16		484	37%	536	92%	-55%	25.0
17		1003	35%	515	22%	13%	8.0
18		1318	27%	283	74%	-47%	1.7
19		1614	26%	973	-13%	39%	14.0
20		1350	12%	841	-6%	18%	3.7

万

专

2019

44

17

30%

事 万

2018

10%

120%

2019

"

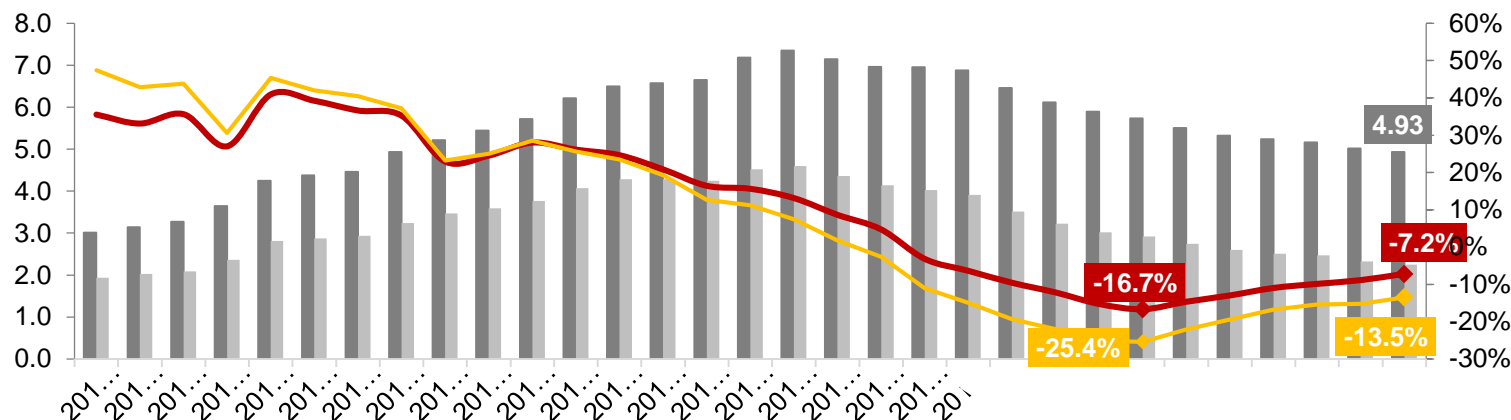
"

"

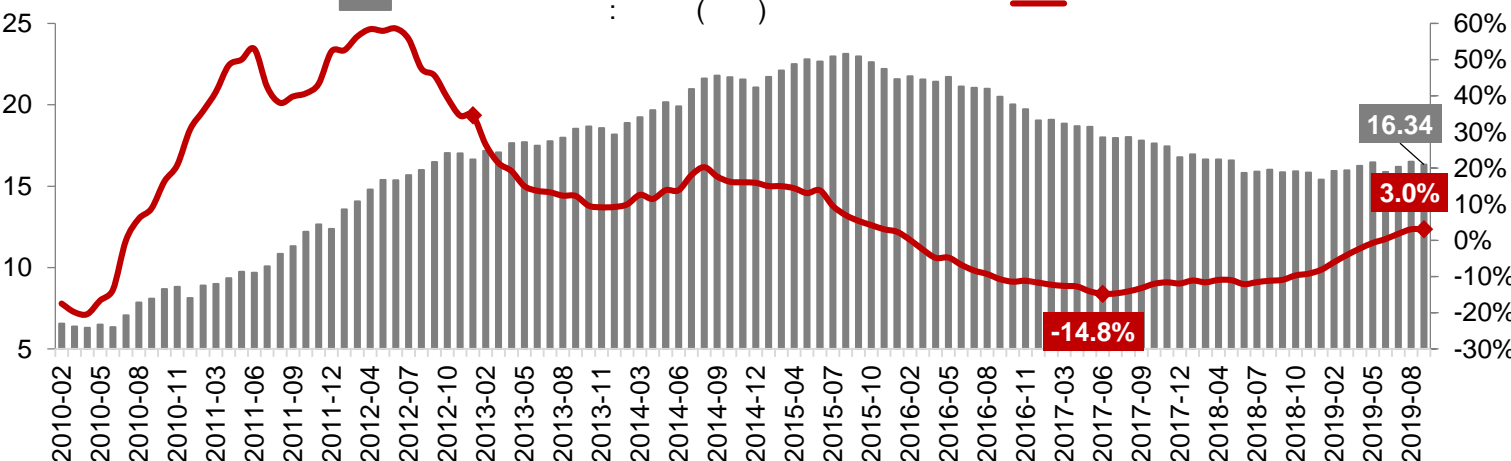
"

"

"



京 (2012-2019Q3)



9
7.2 京 2.25中 4.93中 13.5

13.3 1.8

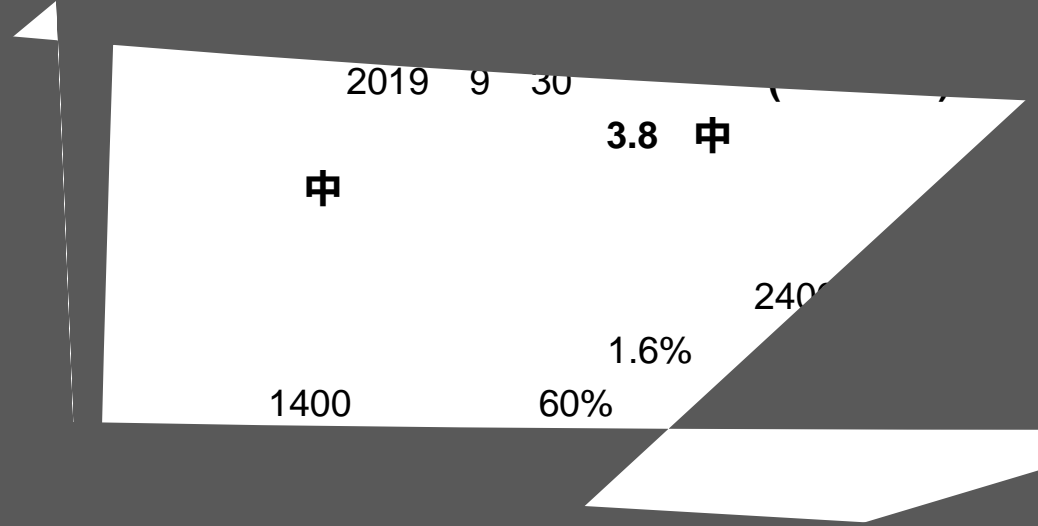
1999 2018

-2000

9 京 16.34中 9 Q2
0.46中 13.2 Q2

0.2

万



TOP20

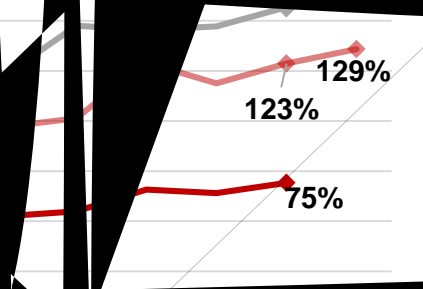
+

(中)

(%)

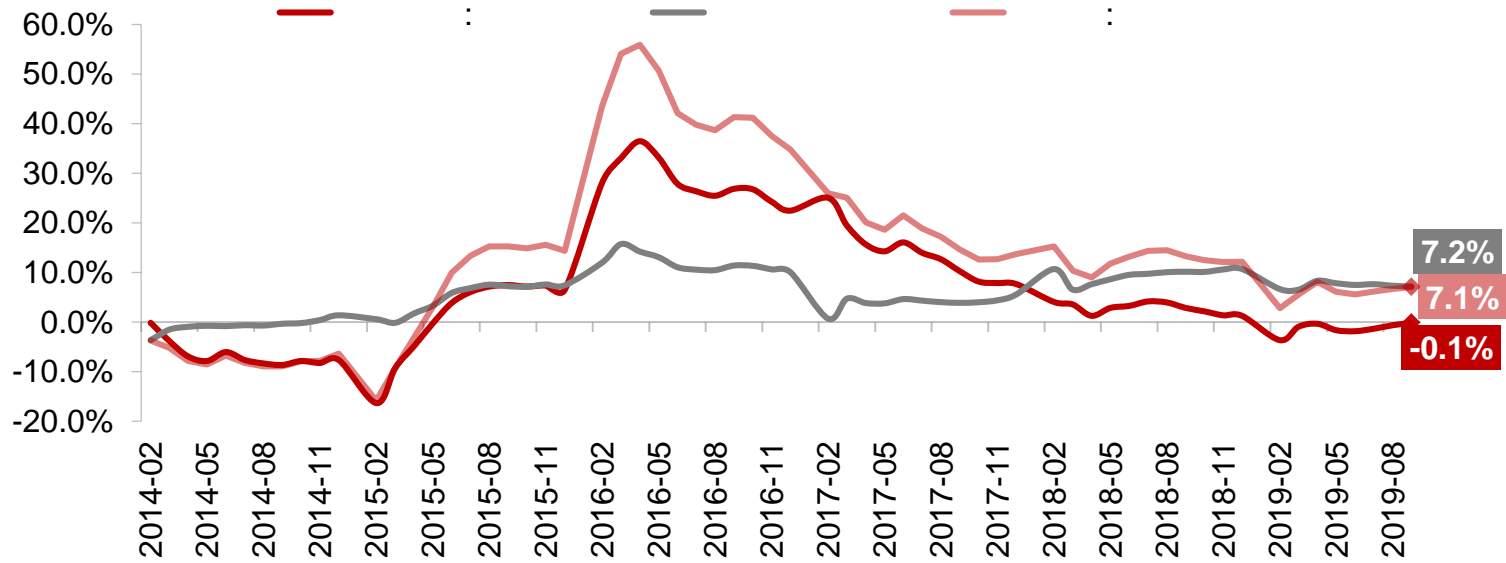
34	715
34	343
34	322
34	199
707	19
382	45%
620	-2%
1168	-2%
280	32
322	
335	
132	

700





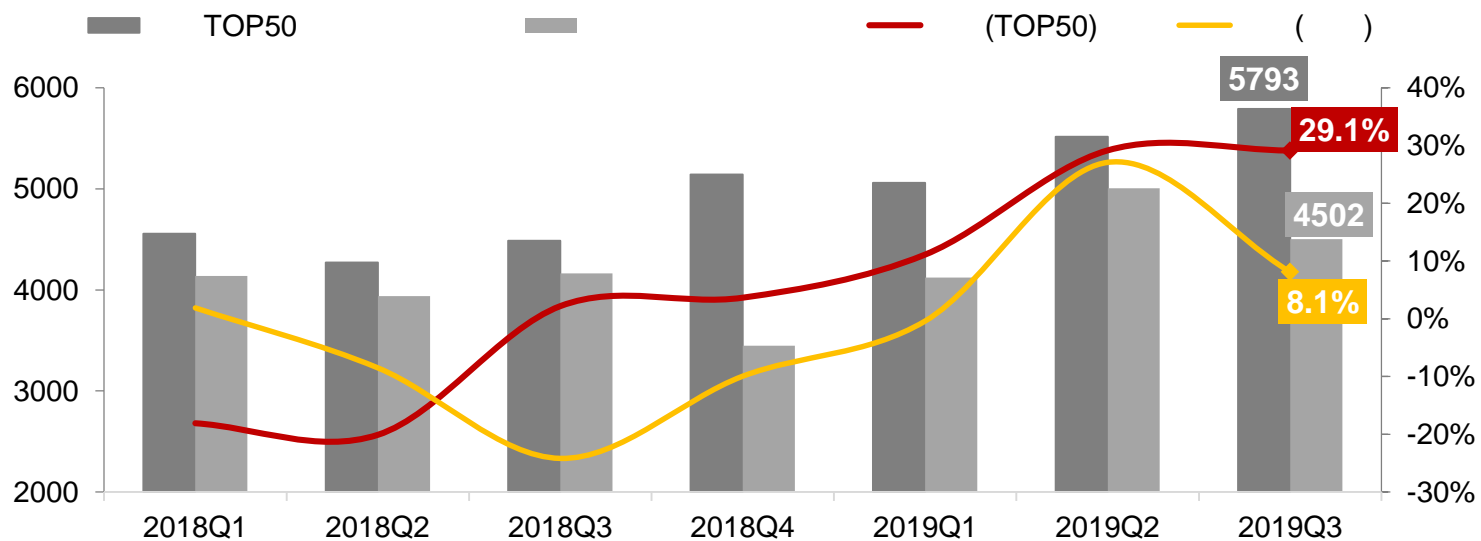
(2014-2019Q3)



世
为
5800 /
4502 /
1200 /
万
TOP50
29%
8.1%

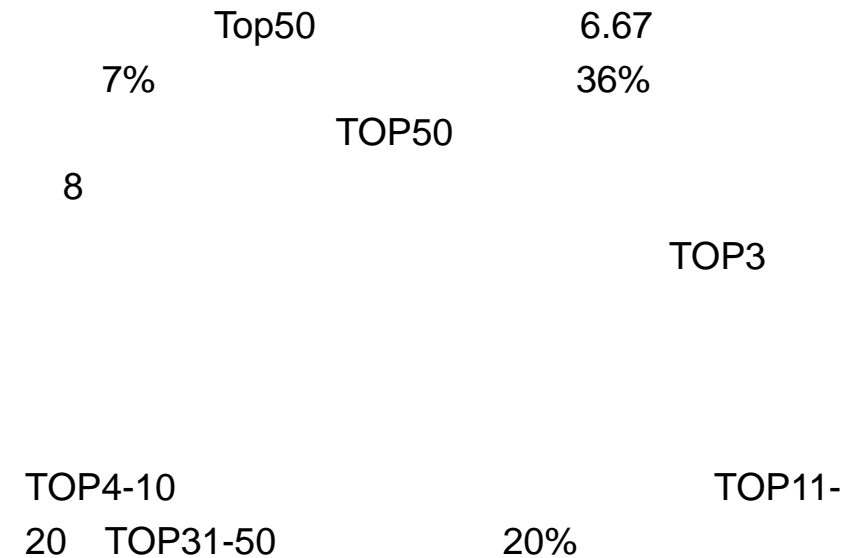
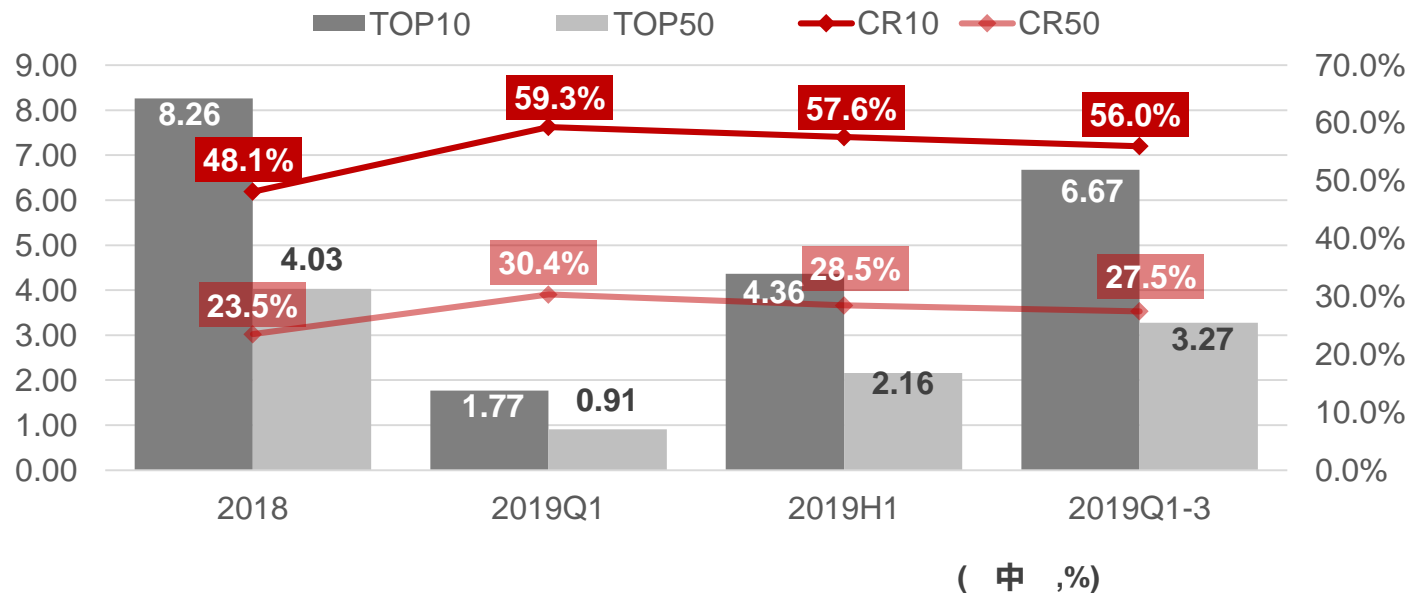
TOP50

(京)



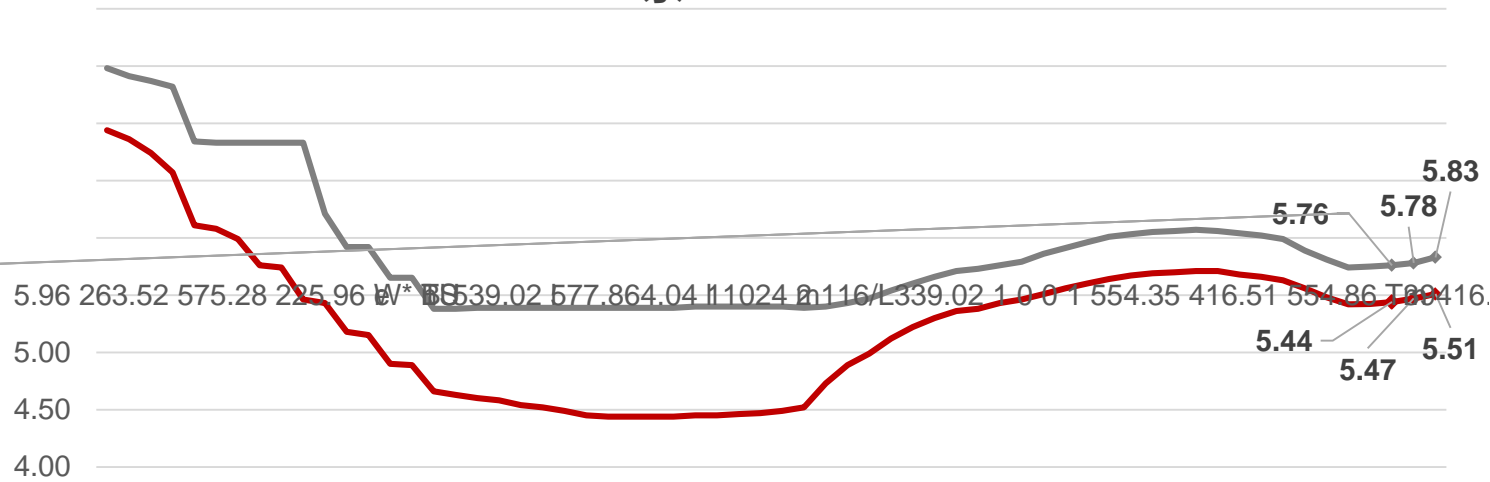


Top50 (中, 2018-2019Q3)



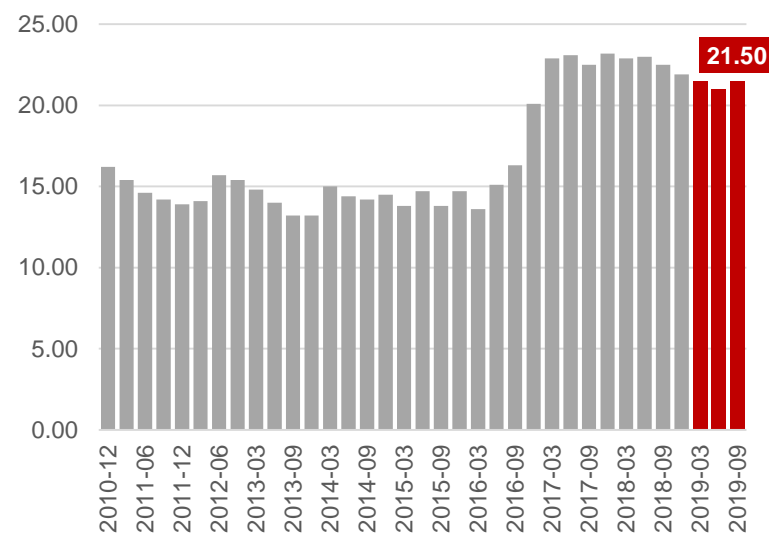
	2018-12	2019-03	2019-06	2019-09
TOP3	21%	-12%	-1%	6%
TOP4-10	31%	19%	20%	14%
TOP11-20	43%	7%	19%	26%
TOP21-30	52%	9%	6%	7%
TOP31-50	54%	22%	25%	21%
	36%	6%	13%	14%

京

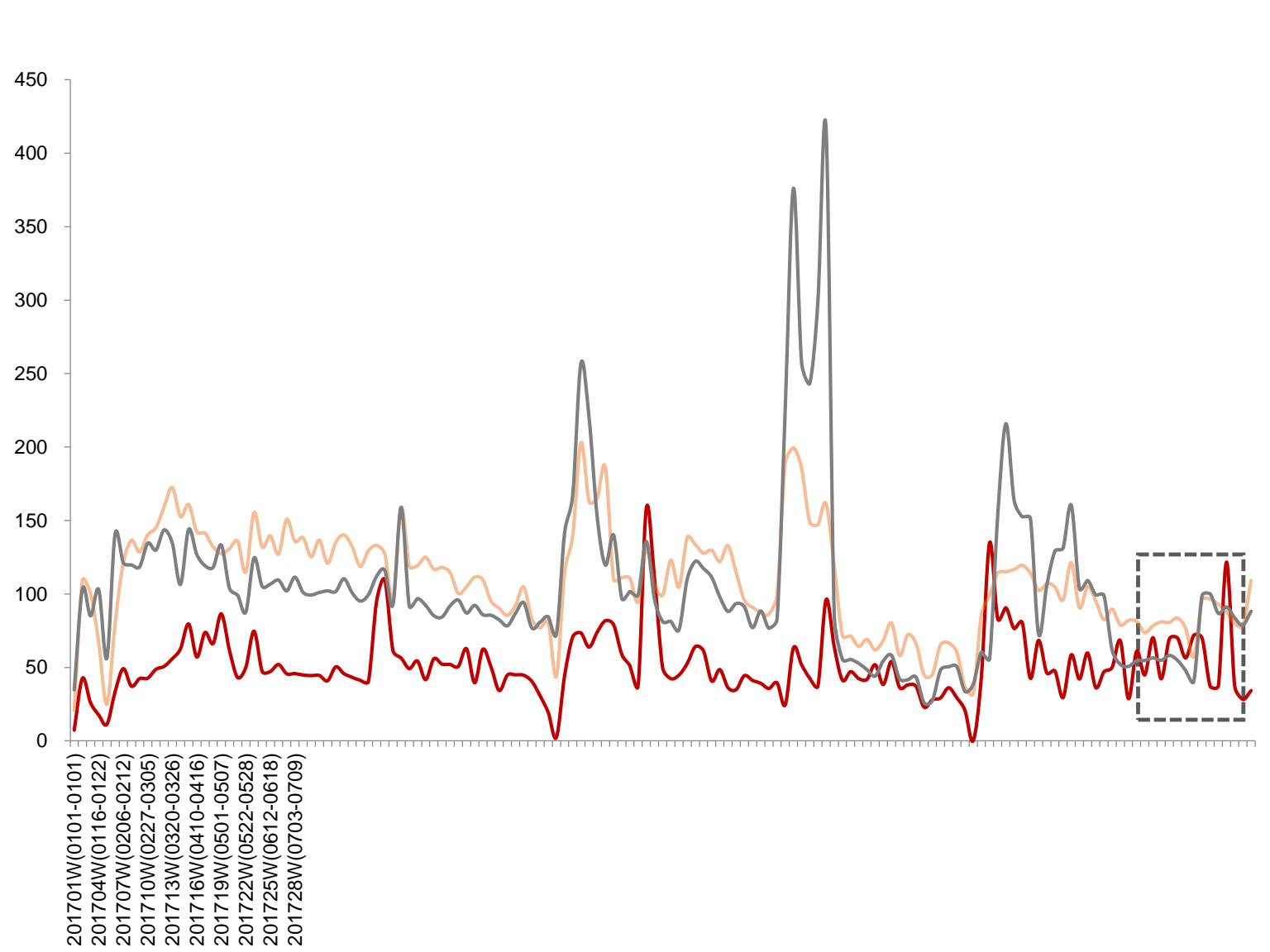


LPR

8



万



亮 万 万 产 产

1-2

2 8

”

” ()

TOP100

CPI

7

”

”

下

下

10

”

”

九

,

”

”

,

8 10

12

1

4

1. :

a) :

b) :

()

a) : () () ().

b) : ;

c) :

2.

45 ()

3.

,

45



了